



# REGIONAL ANANGU SERVICES ABORIGINAL CORPORATION

## INFORMATION PACKAGE – Tyre Fitter Trades Assistant

*Please note that the contents of this information pack are provided to prospective applicants as a general overview of the position. The specific conditions of employment and role description may vary in any final offer of employment that may be provided.*

### 1. Advertisement

#### POSITIONS VACANT

#### Tyre Fitter Trades Assistant

**Are you a skilled Tyre Fitter looking for an exciting opportunity in the heart of Australia? Join our team and become a part of something truly special!**

#### **About the role:**

Based at the RASAC mechanical workshop in Umuwa, situated on the breathtaking APY Lands in the northwest of South Australia, you will be at the heart of Australia's stunning outback. As a skilled Tyre Fitter, you will have the chance to fit/repair tyres and provide trades assistance in our light workshop and around our depot. Your expertise will be put to good use in a dynamic and rewarding environment.

#### **What we offer:**

- Competitive Salary Package
- Self-contained free accommodation (including utilities and wi-fi)
- 6 weeks paid leave (with 17.5% leave loading)
- Generous Not-for-Profit Salary Packaging Benefits

#### **Why join us?**

This is not just a job; it's a chance to experience the unique beauty of the outback. Get ready to immerse yourself in a rich culture and explore the stunning landscapes of Central Australia. If you're passionate about your work and want to make a difference while enjoying an unforgettable adventure, this opportunity is for you!

An information package with full details of the position is available from our:

- website – [www.rasac.com.au](http://www.rasac.com.au)
- email your request to [jobs@rasac.com.au](mailto:jobs@rasac.com.au)
- or contact the RASAC office on (08) 8950 5400.

#### **DON'T MISS OUT! APPLY NOW!**

RASAC is a not-for-profit Aboriginal Corporation with over 30 years' experience in remote service delivery on the APY lands. RASAC is owned and governed by the Anangu people of the APY Lands. RASAC is the biggest employer on the APY Lands, creating real jobs within local communities.

## 2. How to Apply:

Send your resume to [jobs@rasac.com.au](mailto:jobs@rasac.com.au) or contact the RASAC office on (08) 8950 5400.

Applications will not normally be acknowledged on receipt. Only short-listed applicants will be contacted regarding the next phase in the selection process. To those applicants who are not short-listed, we extend our thanks for considering Regional Anangu Services Aboriginal Corporation as a potential employer.

### Role Description

<b>POSITION TITLE:</b>	Tyre Fitter Trades Assistant
<b>REPORTS TO:</b>	Workshop and Depot Operations Manager
<b>POSITION LOCATION:</b>	Umuwa Depot - APY Lands

### Overview

The primary objective of this position is to support the operations of the Umuwa mechanical workshop, and will be primarily responsible for tyre fitting/repairs and providing trades assistance in the light vehicle mechanical workshop and other duties primarily around the Umuwa Depot.

### Key Responsibilities

NOTE: Duties may vary or be updated from time to time in line with updates to service delivery contract obligations and requirements.

- Uphold and maintain RASAC's Strategic Vision, Mission Statement and Values.
- Tyre repairs, fitting, stock management (main duty)
- Provide assistance to mechanics undertaking the repair and maintenance of light vehicles and small plant and equipment
- Complete required work records
- Assisting with unloading of freight
- Assist with organising storage, sorting and dispatch of equipment, spare parts, supplies, materials at depot yard (including uniforms and supplies for RASAC programs)
- Undertake yard work and maintenance duties around the Umuwa depot and rental accommodation including assistance with cleaning, fault reporting and minor repairs (non-trade) when required
- Travel to other communities to assist mechanics as required
- Provide relief support for diesel fuel pumping and sales
- Maintain the cleanliness and security of the workshop
- Maintain the security of tools and equipment
- Relief office duties as required – phone, reception, accommodation bookings (in/out)
- Undertake any other duties as directed that are considered relevant to the position

### WH&S

- Take part in regular toolbox meetings and daily risk assessments as required.
  - Maintain own health and safety and that of other people at the workplace or those who may be affected by the work being carried out.
  - Submit incident and near miss reports as required, and be actively involved in implementing
-

RASAC's WHS system, associated policies and procedures

## **SELECTION CRITERIA**

### **Personal attributes/qualities**

- Attention to detail
- Eagerness to learn
- Integrity
- Patience
- Cultural awareness
- Team contributor
- Good communication skills
- Positive attitude
- Look and listen to understand
- Inclination to assist
- Commitment
- Flexibility

### **Experience and competency**

- Tyre fitting and other experience relevant to the duties of the position
- Ability to complete required workplace documents
- Ability to comply with work procedures and policies
- SA driver's licence
- WHS White Card or ability and willingness to obtain
- Willingness and ability to follow directions and participate in training
- Experience working with Aboriginal people and understanding of Aboriginal culture

This position requires good physical fitness and ability to work in widely varying climatic conditions.

## **ABOUT RASAC**

Regional Anangu Services Aboriginal Corporation ("RASAC") is an Anangu-run organisation that supports the empowerment of all Anangu. The organisation is incorporated under the Commonwealth Corporations (Aboriginal and Torres Strait Islander) Act 2006.

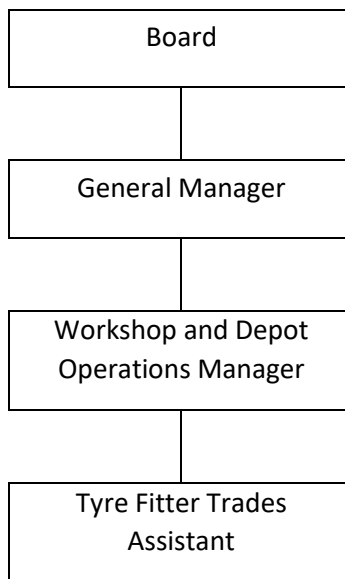
RASAC provides a Community Development Programme (CDP) in conjunction with Municipal Services, Community Patrols, Homelands Essential Services, mechanical workshop services, and other services (e.g., airport reporting and maintenance) across the Anangu Pitjantjatjara Yankunytjatjara (APY) Lands in north-west South Australia. RASAC also has capacity in road maintenance, minor civil works, repairs, and maintenance works.

RASAC employs over 100 staff across operations, administration and management. An administration and finance office is maintained in Alice Springs.

The organisation's principal funding is provided by the National Indigenous Australians Agency (NIAA) for the provision of the Community Development Programme (CDP), Municipal Services (MUNS), Community Patrols, and Homelands services in the various communities and homelands on the Land.

---

## ORGANISATION STRUCTURE



### 3. Salary & Conditions

Standard hours for this position are 38 hours per week plus overtime of up to an additional 10 hours per week\*.

A competitive base salary of \$60,000 is offered, plus opportunities for overtime.

Benefits include:

- Annual leave (6 weeks) plus leave loading (17.5%)
- Superannuation at the relevant Super Guarantee (SG) current rate 11.5%
- \$500 Relocation assistance
- Accommodation and utilities: Hard furnished, self-contained accommodation will be provided at Umuwa on a rent-free basis, including utilities (with generous monthly usage limits).
- Generous Salary Packaging Benefits: Due to the organisation's tax status with the ATO, very attractive salary packaging of the cash component of the salary is available subject to the limits of RASACs fringe benefits tax exemption and to the terms and conditions applying to that scheme from time to time. Further details can be accessed via salary packaging provider's website: <https://eziway.net.au/>.

If you are short listed for employment, a pre-employment medical is required and a police record check is required for the purposes of obtaining an APY permit to enter and stay on the APY Lands.

*\*Overtime estimate is based upon the historical level of overtime worked. There is no guarantee if this will always be the case as it is dependent on the level of work at the time.*

#### 4. Other Information

The APY Lands are located in the far north-western corner of South Australia. The area is remote and the community of Umuwa is located roughly central within the Lands.

Details of the APY Lands and the communities within these Lands, can be obtained from the following websites: <https://www.papertracker.com.au/anangu-communities/> or [www.anangu.com.au](http://www.anangu.com.au).

Permits are required by all visitors to the APY Lands, and for employees to remain in residence on the APY Lands. Willingness to undertake a Police Record check for the purposes of obtaining an APY entry permit is a requirement for the role.

RASAC operates an administration office in Alice Springs. On the Lands our main base is at Umuwa, which is centrally located to all the communities. We also have employees based in and undertake works on each of the other communities on the Lands.

Umuwa is located approximately 450kms south west of Alice Springs (290kms bitumen road and the remainder are unsealed roads).

A map of the APY Lands is provided on the next page.

Further details on RASAC can be accessed via our website [www.rasac.com.au](http://www.rasac.com.au)

