



REGIONAL ANANGU SERVICES
ABORIGINAL CORPORATION

ICN 1902 ABN 15 470 441 855

PO Box 2584 Alice Springs NT 0871
Ph: (08) 8950 5400 Fax: (08) 8952 6371

INFORMATION PACKAGE –Plant Operator

Please note that the contents of this information pack are provided to prospective applicants as a general overview of the position. The specific conditions of employment and role description may vary in any final offer of employment that may be provided.

1. Advertisement

Plant Operator

Umuwa APY Lands, South Australia

The primary duties of this position is to operate our heavy plant & equipment undertaking a variety of works such as grading and maintenance of Homelands roads and community fire breaks, aerodromes works, digging graves and maintenance of waste tip facilities at various sites across the APY Lands. If suitably qualified, the position would also carry out minor servicing and maintenance, and ongoing repairs to heavy plant and equipment as needed.

A background working with and maintaining heavy plant and vehicles associated with civil construction or earthworks projects is required. You will be familiar with plant and equipment such as tilt trays, backhoes, skid steer loaders, front end loaders, excavators, graders, trucks, forklift, etc. and be able to undertake routine maintenance of the plant.

The operator must have good people skills, the ability to communicate with fellow employees including Indigenous workers, workshop staff and external stakeholders.

Trade qualifications and a HR licence required.

Generous salary package including base annual salary, overtime, superannuation, leave loading and housing benefits, plus generous not-for-profit salary packaging to save on tax.

A varied and interesting role, based in the very heart of Australia with a very good employer with lots of extra benefits.

- Free housing including wi-fi and utilities
- 6 weeks annual leave with 17.5% leave loading
- Excellent opportunity to save tax through generous Salary Packaging

An information package with full details of the position is available from our:

- website – www.rasac.com.au
- email your request to jobs@rasac.com.au
- or contact the RASAC office on (08) 8950 5400.

RASAC is a not-for-profit Aboriginal Corporation with over 30 years' experience in remote service delivery on the APY lands.

Send your resume to jobs@rasac.com.au or contact the RASAC office on (08) 8950 5400.

2. How to Apply:

Send your resume to jobs@rasac.com.au or contact the RASAC office on (08) 8950 5400.

Applications will not normally be acknowledged on receipt. Only short-listed applicants will be contacted regarding the next phase in the selection process. To those applicants who are not short-listed, we extend our thanks for considering Regional Anangu Services Aboriginal Corporation as a potential employer.

3. Role Description

POSITION TITLE: Plant Operator

REPORTS TO: Workshop & Depot Operations Manager

POSITION LOCATION: Umuwa

Overview:-

Regional Anangu Services Aboriginal Corporation (“RASAC”) is an Anangu-run organisation that supports the empowerment of all Anangu. The organisation is incorporated under the *Commonwealth Corporations (Aboriginal and Torres Strait Islander) Act 2006* and delivery as range of remote services across the Anangu Pitjantjatjara Yankunytjatjara (APY) Lands in north-west South Australia.

The principal funding of the organisation is provided by National Indigenous Australians Agency (NIAA) for the provision of Community Development Programme (CDP), Municipal Services (MUNS), Community Patrols and Homelands services on the various communities and homelands on the Lands. RASAC also operates light and heavy machinery mechanical workshops and other services such as airport reporting and maintenance, has capacity in road maintenance, and civil works.

RASAC employs over 100 staff across operations, administration and management. A small administration and finance office is maintained in Alice Springs.

Position Objective:-

Working with and reporting directly to the Workshop & Depot Operations Manager, the primary objective of this position is to operate our heavy plant & equipment undertaking works as directed. If suitably qualified, the position would also carry out minor servicing and maintenance, and ongoing repairs to heavy plant and equipment as needed.

Duties:-

The Plant Operator role will be required to operate a range of equipment used in association with civil construction works. This includes, but is not limited to, grading and maintenance of Homelands roads and community fire breaks, aerodromes works, digging graves, waste management at various sites across the APY Lands, and other project works as required.

A background working with and maintaining heavy plant and vehicles associated with civil construction or earthworks projects is required. You will be familiar with plant and equipment such as tilt trays, backhoes, skid steer loaders, front end loaders, excavators, graders, trucks, forklift, etc. and be able to undertake routine maintenance of the plant. The plant operator will also undertake a range of other tasks as required including but not limited to labouring and general repairs and maintenance tasks as needed. The operator must have good people skills, the ability to communicate with fellow employees including Indigenous workers, workshop staff and external stakeholders.

The position is based at Umuwa but will involve regular travel and stays at other communities across the APY Lands.

Key Responsibilities:-

The key responsibilities of this position include, but are not limited to:-

- Undertake daily vehicle checks and preventative maintenance of vehicle/s and any machinery items to be used for the day to ensure they are in operational and safe condition.
- Work under the direction of site supervisors and managers, undertaking a broad spectrum of Civil works orientated activities.
- Operate machinery as directed in a safe and legal manner in accordance to the manufacturers instruction, road traffic rules & regulations, with consideration to local conditions and WHS and industry best practice.
- Undertake refueling of plant and equipment as required.
- Maintain records and service history of RASAC Plant and vehicles.
- Maintain records of job sheets and plant hours.
- Report any major damage and repairs needed to equipment to the Workshop & Depot Operations Manager.
- Ensure the cleanliness and security of plant & equipment and the depot yard.
- Work as a “Team Player” supporting other workers and work areas.
- Work unsupervised.
- Supervise and assist with the training and support of unskilled workers if required.
- Labouring and other repairs and maintenance tasks as required.
- When working away from Umuwa there may be a need to camp out or stay in accommodation at other communities.
- Other duties as directed, including work across the APY Lands.

If suitably qualified (eg mechanical trade qualification)

- Undertake regular servicing of plant and machinery.
- Undertake repairs and maintenance of plant and machinery.

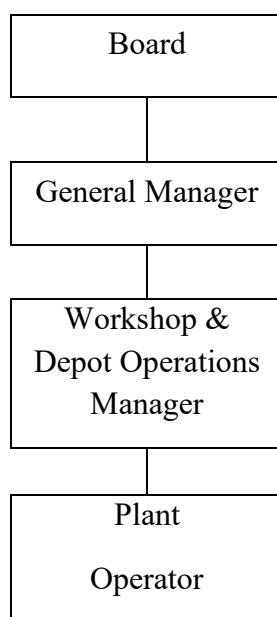
WHS

- Maintain own health and safety and that of other people at the workplace or those who may be affected by the work being carried out.
- Legal requirements met and RASAC’s WHS policies and procedures complied with.

Skills, Experience, Qualifications and Attributes:-

a) Qualifications	Essential	Desirable
⇒ SA HC driver's licence	✓	
⇒ Plant tickets/licences		✓
⇒ Forklift (or willingness and ability to obtain	✓	
⇒ Telehandler, Elevated Work Platform training (or willingness and ability to obtain		✓
⇒ First Aid Certificate (or willingness and ability to obtain)	✓	
⇒ WHS White Card (or willingness and ability to obtain)	✓	
⇒ Appropriate mechanical trade, technical qualifications		✓
b) Experience, knowledge and skills		
⇒ Experience operating, maintaining and servicing heavy plant and machinery	✓	
⇒ Ability to undertake general maintenance and labouring duties	✓	
⇒ Strong attention to detail, good time management skills and demonstrated commitment to project safety.	✓	
⇒ Experience working with Aboriginal people		✓
⇒ Ability to work without supervision	✓	
⇒ Good verbal and written communication skills	✓	
⇒ Knowledge of and commitment to WHS responsibilities.	✓	
⇒ Willingness to travel to and work in remote locations	✓	
⇒ Willingness and ability to learn and follow RASAC's policies and procedures.	✓	
⇒ Willingness to undergo a Police Record check for purposes of obtaining an APY Lands entry permit	✓	
⇒ Willingness to complete a pre-employment medical check	✓	

ORGANISATION STRUCTURE



4. Salary & Conditions

Standard hours for this position are 38 hours per week plus overtime of up to an additional 10 hours per week*.

A competitive base salary commencing in the range of \$75,000 (based upon experience) is offered, with a potential total salary package in the range of over \$110,000 inclusive of overtime*, annual leave loading, superannuation and not-for-profit tax benefits plus free housing.

Benefits include:

- Annual leave (6 weeks) with leave loading (17.5%)
- Personal Leave – 10 days
- \$500 Relocation assistance
- Generous Salary Packaging Benefits: Due to the organisation's tax status with the ATO, very attractive salary packaging of the cash component of the salary is available subject to the limits of RASACs fringe benefits tax exemption and to the terms and conditions applying to that scheme from time to time. Further details can be accessed via salary packaging provider's website: <https://eziway.net.au/>.
- Accommodation and utilities: Hard furnished, self-contained accommodation will be provided at Umuwa on a rent-free basis, including wi-fi and utilities (with generous monthly usage allowances).

If you are short listed for employment, a pre-employment medical is required and a police record check is required for the purposes of obtaining an APY permit to enter and stay on the APY Lands.

**Overtime estimate is based upon the historical level of overtime worked. There is no guarantee if this will always be the case as it is dependent on the level of work at the time.*

5. Other Information

The APY Lands are located in the far north-western corner of South Australia. The area is remote and the community of Umuwa is located roughly central within the APY Lands.

Details of the APY Lands and the communities within these Lands, can be obtained from the following websites: www.anangu.com.au.

Permits are required by all visitors to the APY Lands, and for employees to remain in residence on the APY Lands. Willingness to undertake a Police Record check for the purposes of obtaining an APY entry permit is a requirement for the role.

RASAC operates an administration office in Alice Springs. On the Lands our main base is at Umuwa, which is centrally located to all the communities. We also have employees based in and undertake works on each of the other communities on the Lands.

Umuwa is located approximately 450kms south west of Alice Springs (290kms bitumen road and the remainder are unsealed roads).

A map of the APY Lands is provided on the next page.

Further details on RASAC can be accessed via our website www.rasac.com.au

APY Lands Map

