



# REGIONAL ANANGU SERVICES ABORIGINAL CORPORATION

## INFORMATION PACKAGE – Light Vehicle Mechanic

*Please note that the contents of this information pack are provided to prospective applicants as a general overview of the position. The specific conditions of employment and role description may vary in any final offer of employment that may be provided.*

### 1. Advertisement

#### POSITIONS VACANT

#### LIGHT VEHICLE MECHANIC

**An exciting opportunity for a qualified mechanic to join our dynamic team in outback!**

**This position is based at the RASAC mechanical workshop at Umuwa on the APY Lands in the north west of South Australia.**

We are seeking a light vehicle mechanic to join our team.

Work on a wide range of vehicles: 4WD fleet, small buses, static, light plant, and equipment.

A competitive salary package plus superannuation will be negotiated with the successful applicant.

The position comes with self-contained free accommodation including utilities and wi-fi, 6 weeks paid leave with 17.5% leave loading and generous not-for-profit salary packaging benefits.

Get an outback experience in the centre of Australia!

An information package with full details of the position is available from our website – [www.rasac.com.au](http://www.rasac.com.au); email your request to [jobs@rasac.com.au](mailto:jobs@rasac.com.au) or contact the RASAC office on (08) 8950 5400.

#### **DON'T MISS OUT! APPLY NOW!**

RASAC is a not-for-profit Aboriginal Corporation with over 30 years' experience in remote service delivery on the APY lands. RASAC is owned and governed by the Anangu people of the APY Lands. RASAC is the biggest employer on the APY Lands, creating real jobs within local communities.

### 2. How to Apply:

Send your resume to [jobs@rasac.com.au](mailto:jobs@rasac.com.au) or contact the RASAC office on (08) 8950 5400.

Applications will not normally be acknowledged on receipt. Only short-listed applicants will be contacted regarding the next phase in the selection process. To those applicants who are not short-listed, we extend our thanks for considering Regional Anangu Services Aboriginal Corporation as a potential employer.

### **3. Role Description – Light Vehicle Mechanic:**

#### **Overview:**

Regional Anangu Services Aboriginal Corporation (“RASAC”) is an Anangu-run organisation that supports the empowerment of all Anangu. The organisation is incorporated under the Commonwealth Corporations (Aboriginal and Torres Strait Islander) Act 2006.

RASAC provides a range of services including municipal, mechanical, accounting and homelands essential services and community patrols across the Anangu Pitjantjatjara Lands (“APY”) in north-west South Australia. RASAC employs over 100 staff across operations, administration and management, the majority of whom live and work on the APY Lands for extended periods of time. A small administration and finance office is maintained in Alice Springs.

The principal funding of the organisation is provided by the NIAA for the provision of Municipal Services (MUNS) and Community Patrols on the APY Lands.

#### **Position Objective:**

Based in the Umuwa workshop and reporting to the Workshop Manager, the position of Light Vehicle Mechanic:

- undertakes the repair and maintenance of light vehicles for both internal and external customers
- assists with the repair and maintenance of static, heavy and light plant and equipment
- provides assistance with other tasks around the workshop as required, including tyre repairs and replacement.

#### **Key Responsibilities:**

- Undertake the repair and maintenance of light vehicles including 4x4 vehicles and small passenger buses
- Assist in the repair and maintenance of static, heavy and light plant at the workshop
- Travel to other communities as required to undertake mechanical repairs on RASAC vehicles and equipment.
- Repair minor mechanical and miscellaneous items of equipment
- Replacement and repair of tyres
- Repair miscellaneous items of equipment
- Ensure the cleanliness and security of the Workshop
- Ensure the security of tools and equipment
- Maintain records and service history of RASAC Plant
- Daily and fortnightly reporting of labour and plant charge-out
- Stock control
- Undertake fee for service work as required
- Supervise apprentice mechanic/s, trades assistants or relief mechanic/s where required
- Undertake any other duties as directed that are considered relevant to the position

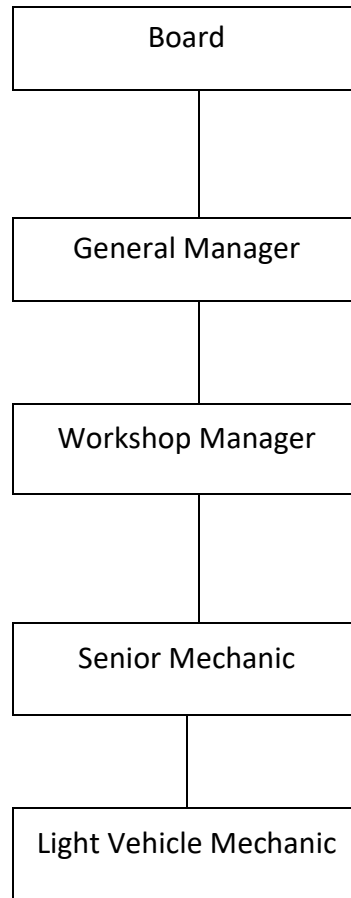
#### **WHS**

- Maintain own health and safety and that of other people at the workplace or those who may be affected by the work being carried out.
- Legal requirements met and RASAC’s WHS policies and procedures complied with.

**Skills, Experience, Qualifications and Attributes:**

<b>a) Qualifications</b>	<b>Essential</b>	<b>Desirable</b>
Appropriate work-related trade, technical qualifications	✓	
Experience in repairs & servicing of a range of light vehicles	✓	
Experience in repairs & servicing of light plant & equipment		✓
SA class driver's licence	✓	
WHS White Card (or ability to obtain)	✓	
Forklift High Risk Ticket (or ability to obtain)	✓	
First Aid Certificate		✓
<b>b) Experience, knowledge and skills</b>		
Mechanical and auto electrical skills and experience	✓	
Maintain licences and qualifications required for the position	✓	
Willingness to travel to and work in remote locations	✓	
Good team work and communication skills	✓	
Ability to work in high paced work environment with minimal supervision	✓	
Basic welding and fabricating skills		✓
Car air-conditioning experience and skills		✓
Demonstrated knowledge of relevant WHS legislation and ability to work within organisational WHS systems, associated policies and procedures.	✓	
Plant operator tickets and experience		✓
Willingness to undergo a medical check	✓	
Willingness to undergo and obtain a Police Certification check for the purpose of obtaining an APY entry permit.	✓	
Willingness to provide evidence of 2 dose COVID-19 vaccination status for the purpose of obtaining an APY entry permit.	✓	

## ORGANISATION STRUCTURE



## **4. Salary & Conditions**

Standard hours for this position are 38 hours per week plus overtime of up to an additional 10 hours per week\*.

A competitive base salary in the range of \$70,000 to \$80,000 (based upon experience) is offered, with a potential total salary package in the range of \$121,000 to \$132,000 inclusive of overtime, leave loading, superannuation, not-for-profit tax benefits and housing benefits will be negotiated with the successful applicant.

Benefits include:

- Annual leave (6 weeks) plus leave loading (17.5%)
- \$500 Relocation assistance
- Generous Salary Packaging Benefits: Due to the organisation's tax status with the ATO, very attractive salary packaging of the cash component of the salary is available subject to the limits of RASACs fringe benefits tax exemption and to the terms and conditions applying to that scheme from time to time. Further details can be accessed via salary packaging provider's website: <https://eziway.net.au/>.
- Accommodation and utilities: Hard furnished, self-contained accommodation will be provided at Umuwa on a rent-free basis, including utilities (with generous monthly usage limits).

If you are short listed for employment, a pre-employment medical is required and a police record check and evidence of COVID-19 vaccinations are required for the purposes of obtaining an APY permit to enter and stay on the APY Lands.

*\*Overtime estimate is based upon the historical level of overtime worked. There is no guarantee if this will always be the case as it is dependent on the level of work at the time.*

## **5. Other Information**

The APY Lands are located in the far north-western corner of South Australia. The area is remote and the community of Umuwa is located roughly central within the Lands.

Details of the APY Lands and the communities within these Lands, can be obtained from the following websites: <https://www.papertracker.com.au/anangu-communities/> or [www.anangu.com.au](http://www.anangu.com.au).

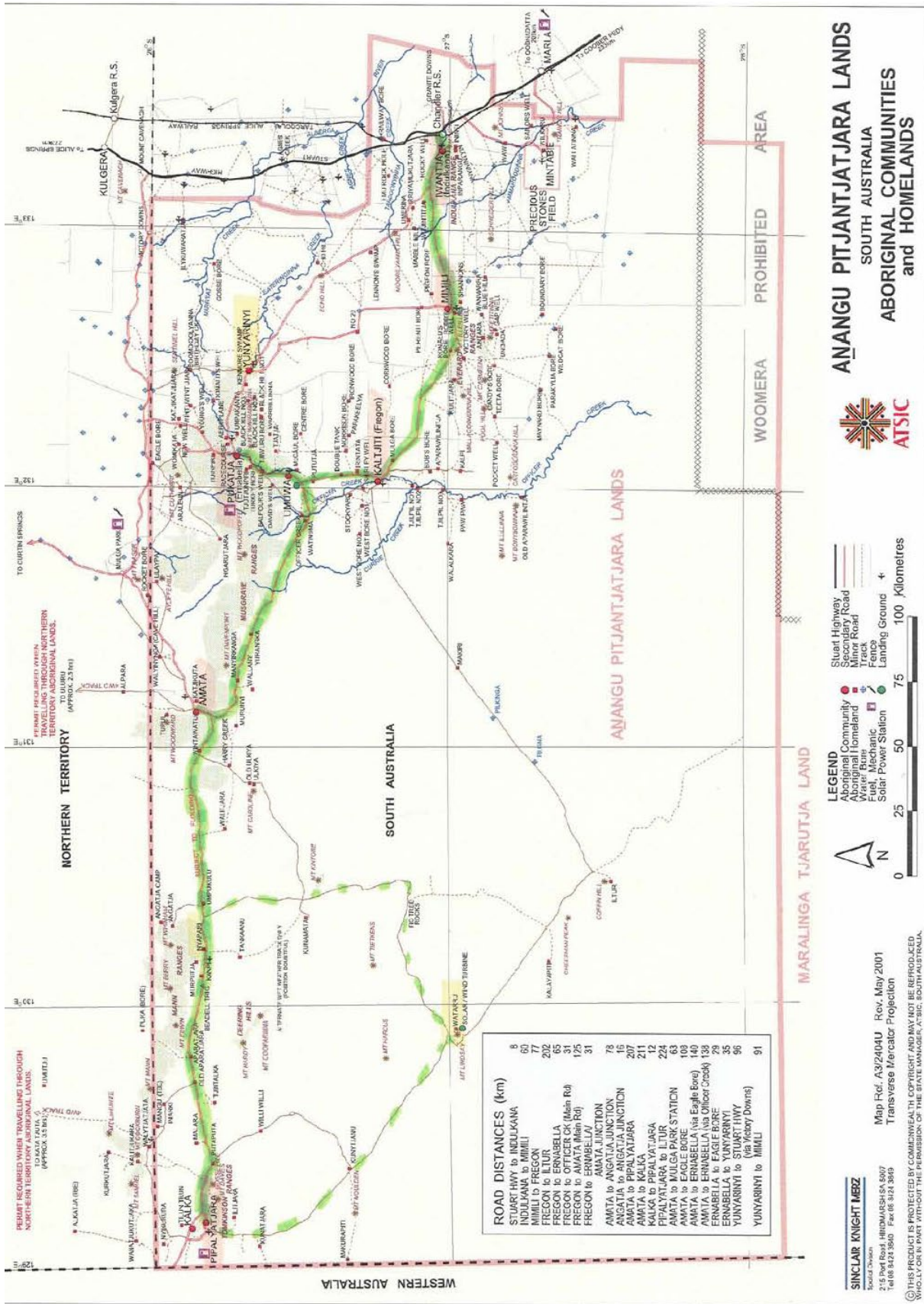
Permits are required by all visitors to the APY Lands, and for employees to remain in residence on the APY Lands. Willingness to undertake a Police Record check for the purposes of obtaining an APY entry permit is a requirement for the role.

RASAC operates an administration office in Alice Springs. On the Lands our main base is at Umuwa, which is centrally located to all the communities. We also have employees based in and undertake works on each of the other communities on the Lands.

Umuwa is located approximately 450kms south west of Alice Springs (290kms bitumen road and the remainder are unsealed roads).

A map of the APY Lands is provided on the next page.

Further details on RASAC can be accessed via our website [www.rasac.com.au](http://www.rasac.com.au)



**ANANGU PITJANTJATJARA LANDS**  
SOUTH AUSTRALIA  
**ABORIGINAL COMMUNITIES**  
and **HOMELANDS**



**LEGEND**

- Aboriginal Community
- Aboriginal Homeland
- Fuel, Mechanic
- Solar Power Station
- Stuart Highway
- Secondary Road
- Minor Road
- Fence
- Landing Ground

0 25 50 75 100 Kilometres

**ROAD DISTANCES (km)**

STUART HWY to INDIJANA	8
STUART HWY to MIMILI	77
MIMILI to FREGON	202
FREGON to ERNABELLA	65
FREGON to OFFICER CK (Main Rd)	31
FREGON to AMATA (Main Rd)	125
FREGON to ERNABELLA	31
AMATA to ANGATA JUNCTION	78
ANGATA to ANGATA JUNCTION	15
ANGATA to PIPALYATJARA	207
AMATA to KALKA	211
KALKA to PIPALYATJARA	12
PIPALYATJARA to LITUR	224
AMATA to MULGA PARK STATION	63
AMATA to EAGLE BORE	109
AMATA to ERNABELLA (via Eagle Bore)	109
AMATA to ERNABELLA (via Eagle Bore)	138
ERABELLA to EAGLE BORE	29
ERNABELLA to YUNYARINYI	35
YUNYARINYI to STUART HWY (via Vicky Downs)	96
YUNYARINYI to MIMILI	91

**SINCLAIR KNIGHT MERZ**  
Spatial Division  
215 Port Road, INDIJANA SA 5467  
Tel 08 8424 9500 Fax 08 8424 9809

Map Ref. A392404U Rev. May 2001  
Transverse Mercator Projection

© THIS PRODUCT IS PROTECTED BY COMMONWEALTH COPYRIGHT AND MAY NOT BE REPRODUCED WHOLLY OR IN PART WITHOUT THE PERMISSION OF THE STATE MANAGER, ATSIC, SOUTH AUSTRALIA.